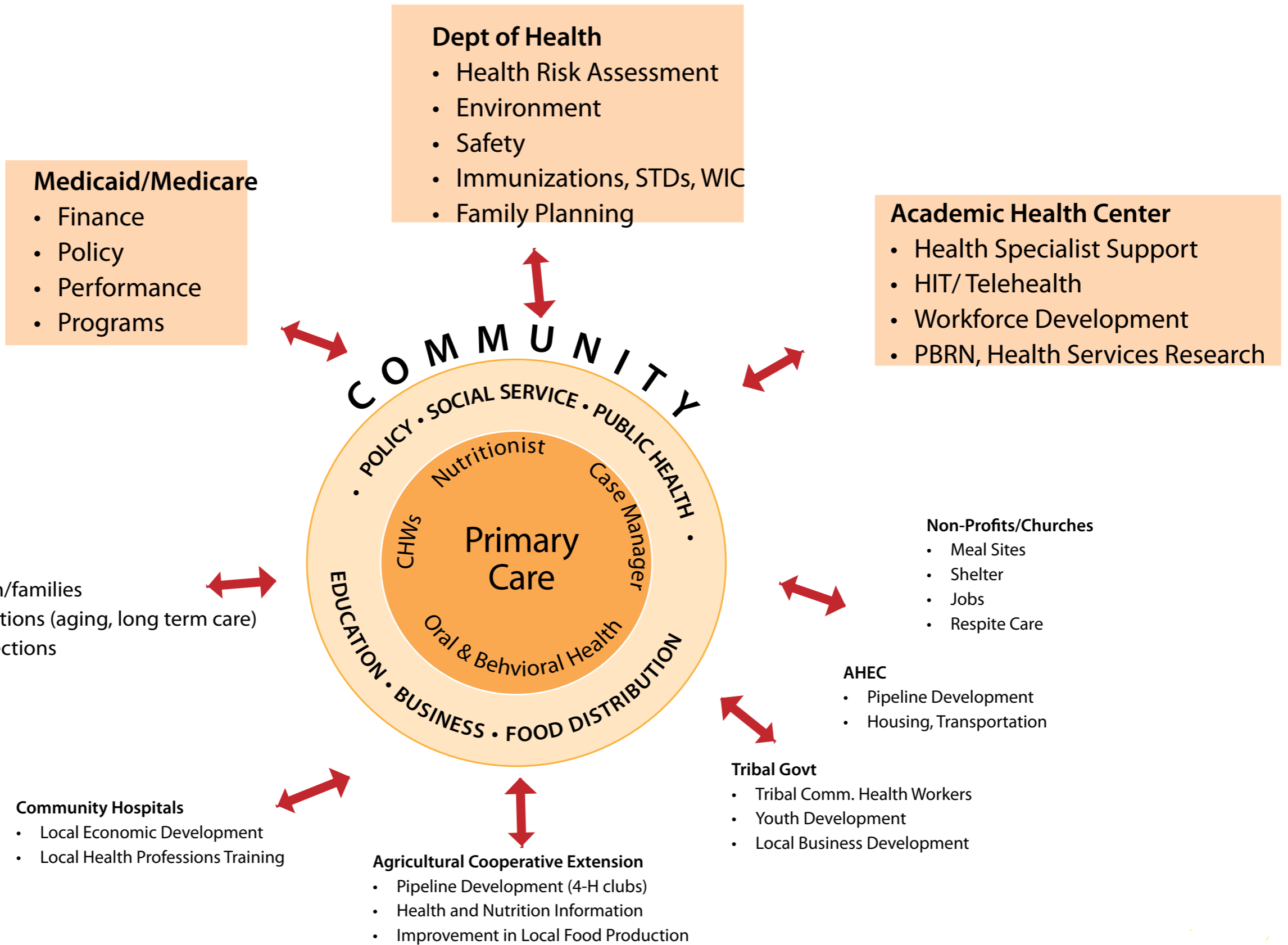
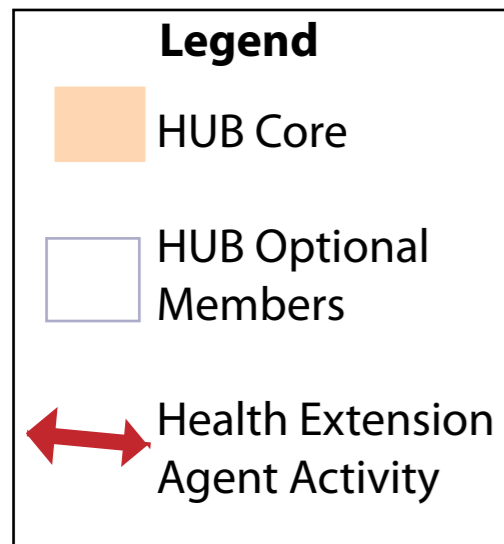


RELEVANCE OF THE HUB IN PRIMARY CARE EXTENSION PROGRAM: Improving Practice Quality and Community Health

SOCIAL DETERMINANTS OF HEALTH

Income * Social Status* Education * Physical environment * Social support networks* Access to health services * Gender equity * Poverty



OUTCOMES

Improve Practice Quality, Reduce Cost

- Greater use preventive services (smoking Cessation; DM, lipid, depression screen, immunizations, pap smears, mammograms)
- Employ evidence-based guidelines for screening and treatment
- Reduced ED use
- Reduced hospitalization

Improve Community Health by Increasing Health Equity

- Better housing
- Reduced hunger
- Safer environment
- Increased school completion
- Improved social networking