

Precedence Care Coordination Entity



Presented to: Health & Medicine Policy Research Group
December 19, 2012

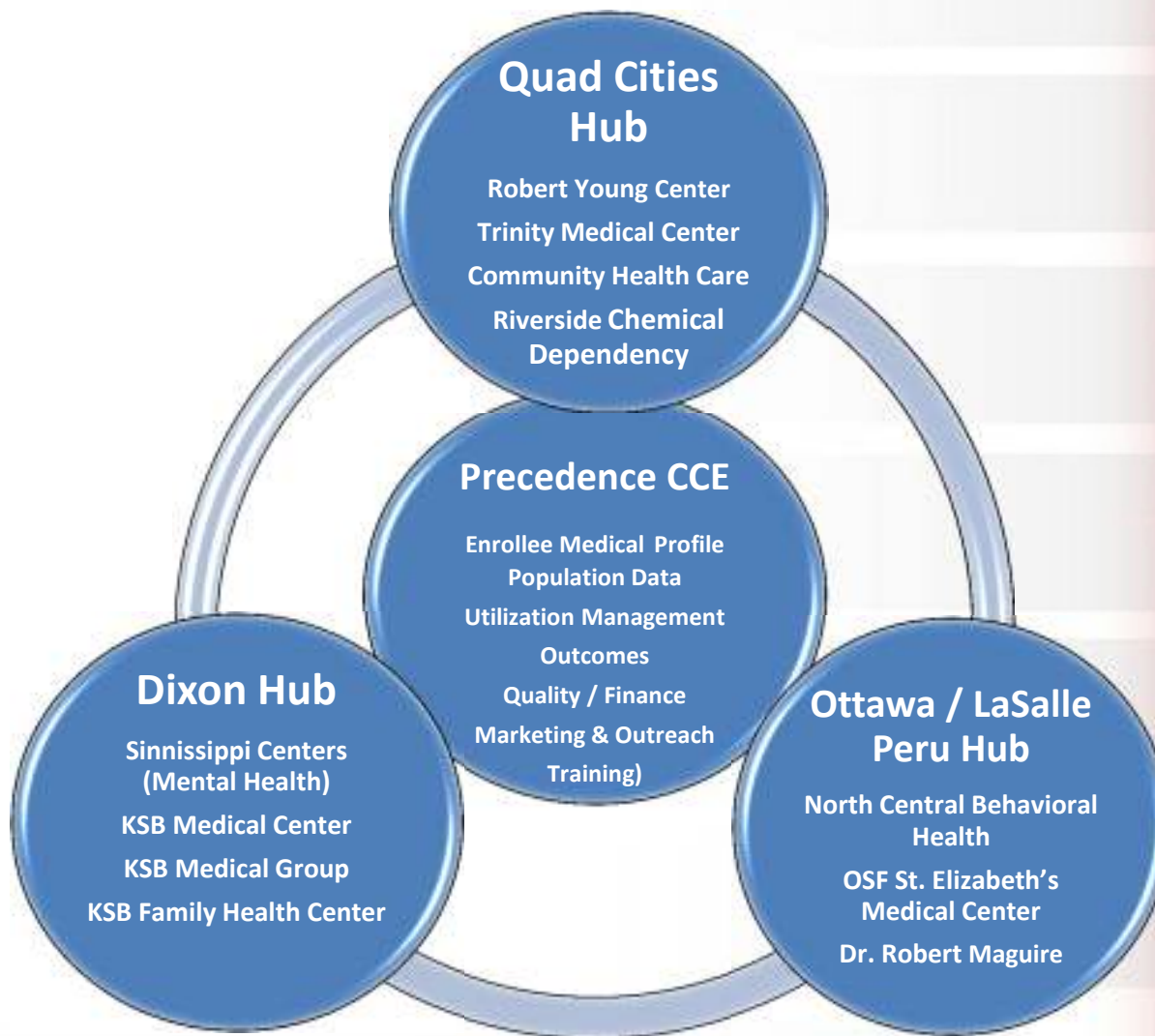
PRECEDENCE CCE

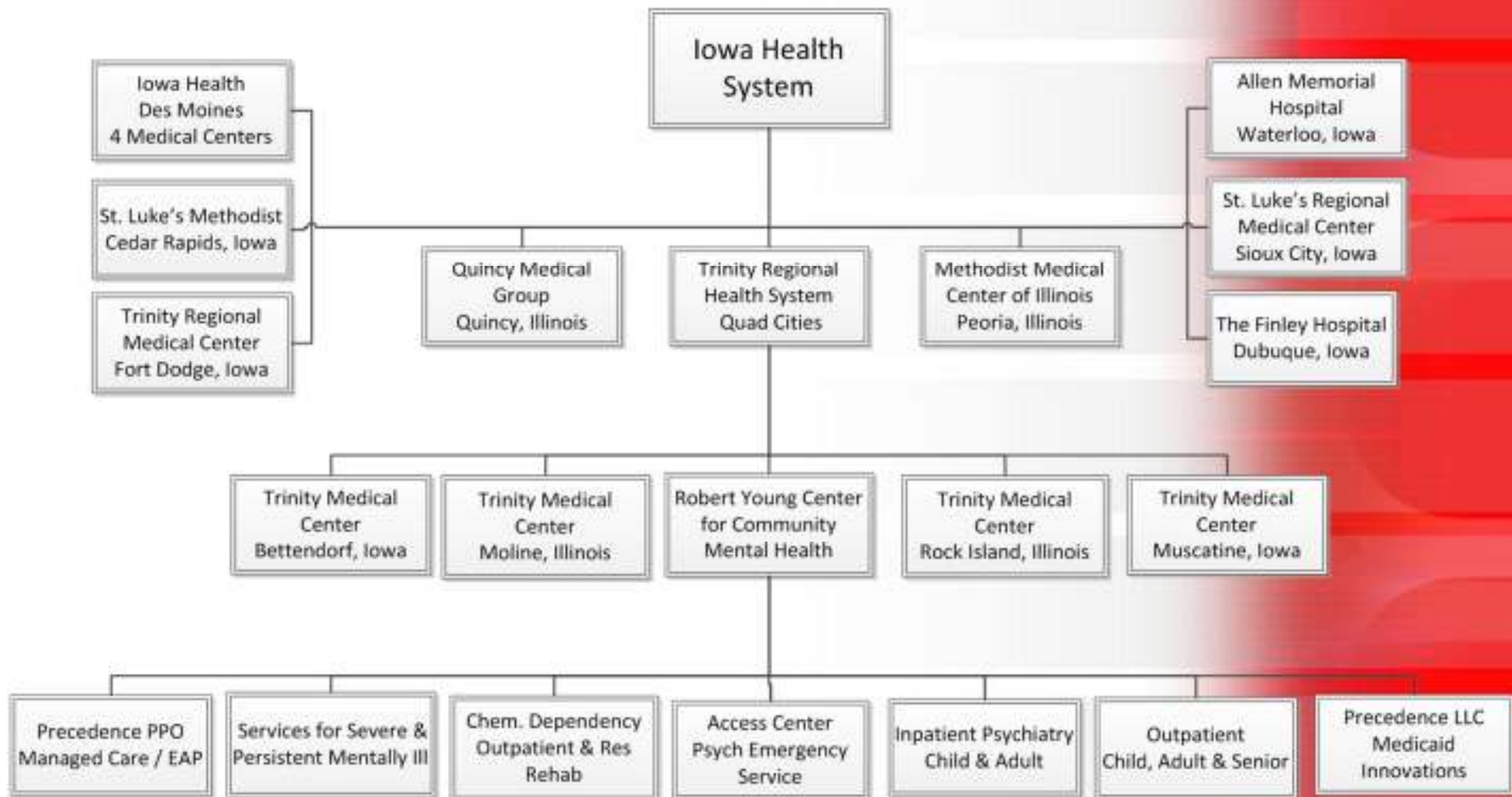
-  Dixon Hub
-  Rock Island Hub
-  LaSalle Hub



Illinois DHFS Innovations Demonstration Project

Geographic Hubs and Partners





Target Population

- Adults with Severe Mental Illnesses and/or Substance Abuse and,
- Having or being at risk for chronic conditions such as diabetes, asthma, COPD, heart disease, hypertension, BMI > 25

Guiding Principles

- Person Centered
- Recovery Oriented
- Data Driven

Scope of Project

- Comprehensive Care Management
- Care coordination & health promotion
- Comprehensive transitional care/follow-up
- Patient and family support
- Referral to community and social support services
- Patient Education/Self-management
- Coordination among medical, behavioral, dental, and other community providers
- HIT

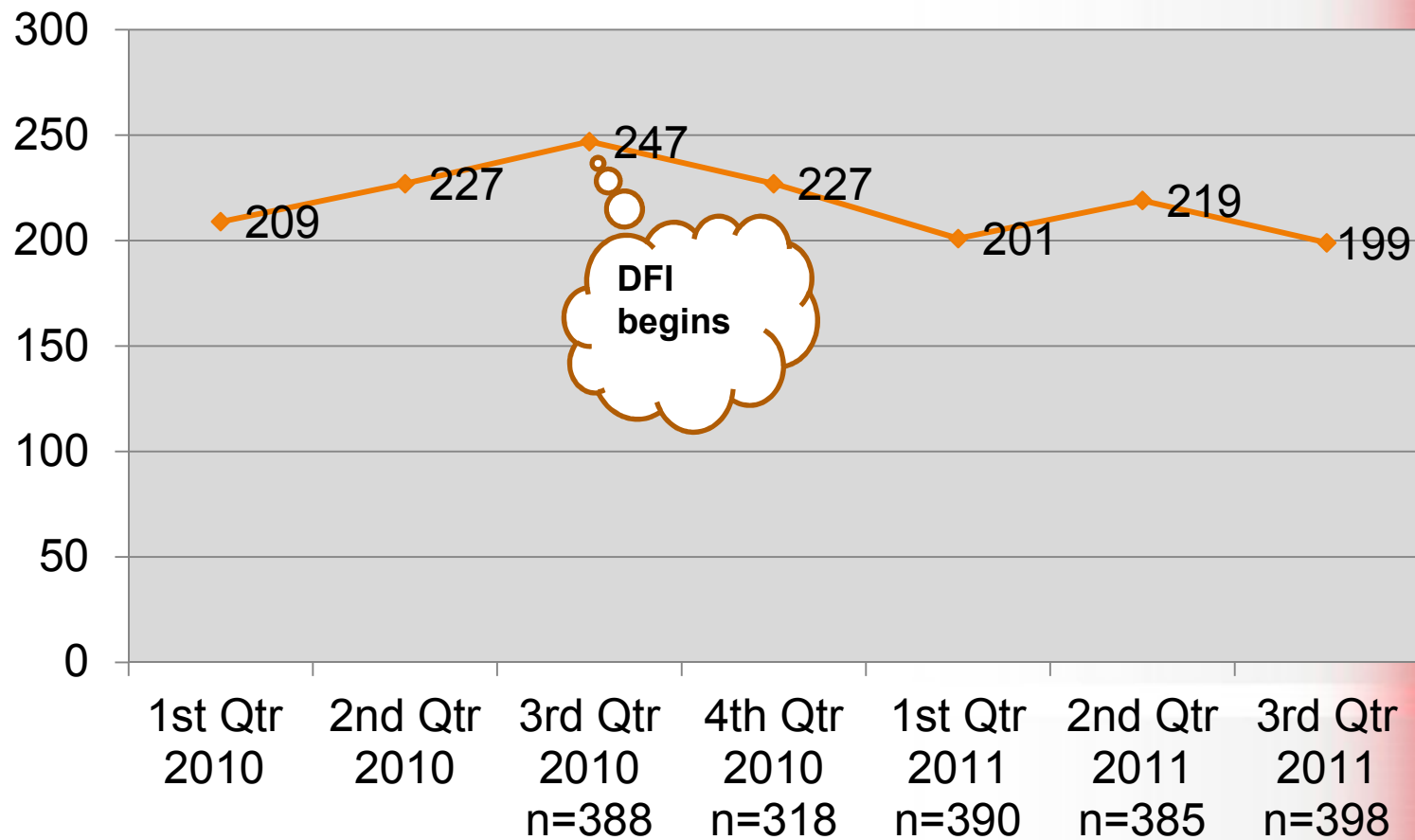
Expected Outcomes

- Reduce hospitalizations, readmissions and unnecessary Emergency Room visits
- Improve coordination and transitions between levels of care
- Enhance treatment and care coordination services for clients in rural areas
- Establish alliances and effectively utilize community and social service supports to help clients and family members
- Receive National Committee for Quality Assurance (NCQA) accreditation for Health Homes

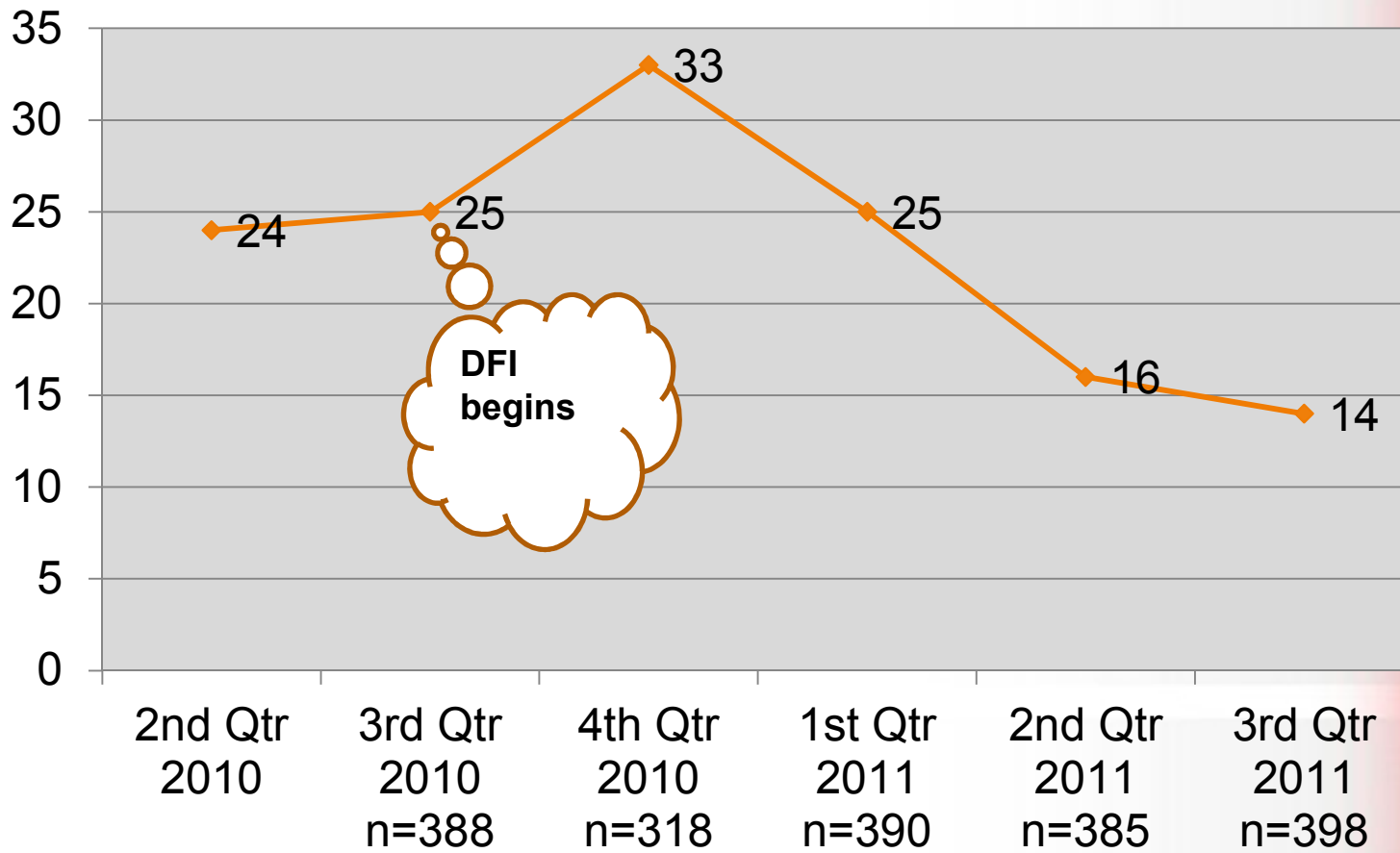
Donated Funds Initiative

- 3 year demonstration funded through DMH
- Collaboration between CCMHC and FQHC
- Staff education
- Co-location of providers (bi-directional)
- Establish behavioral health homes for individuals with SMI and medical co-morbidities

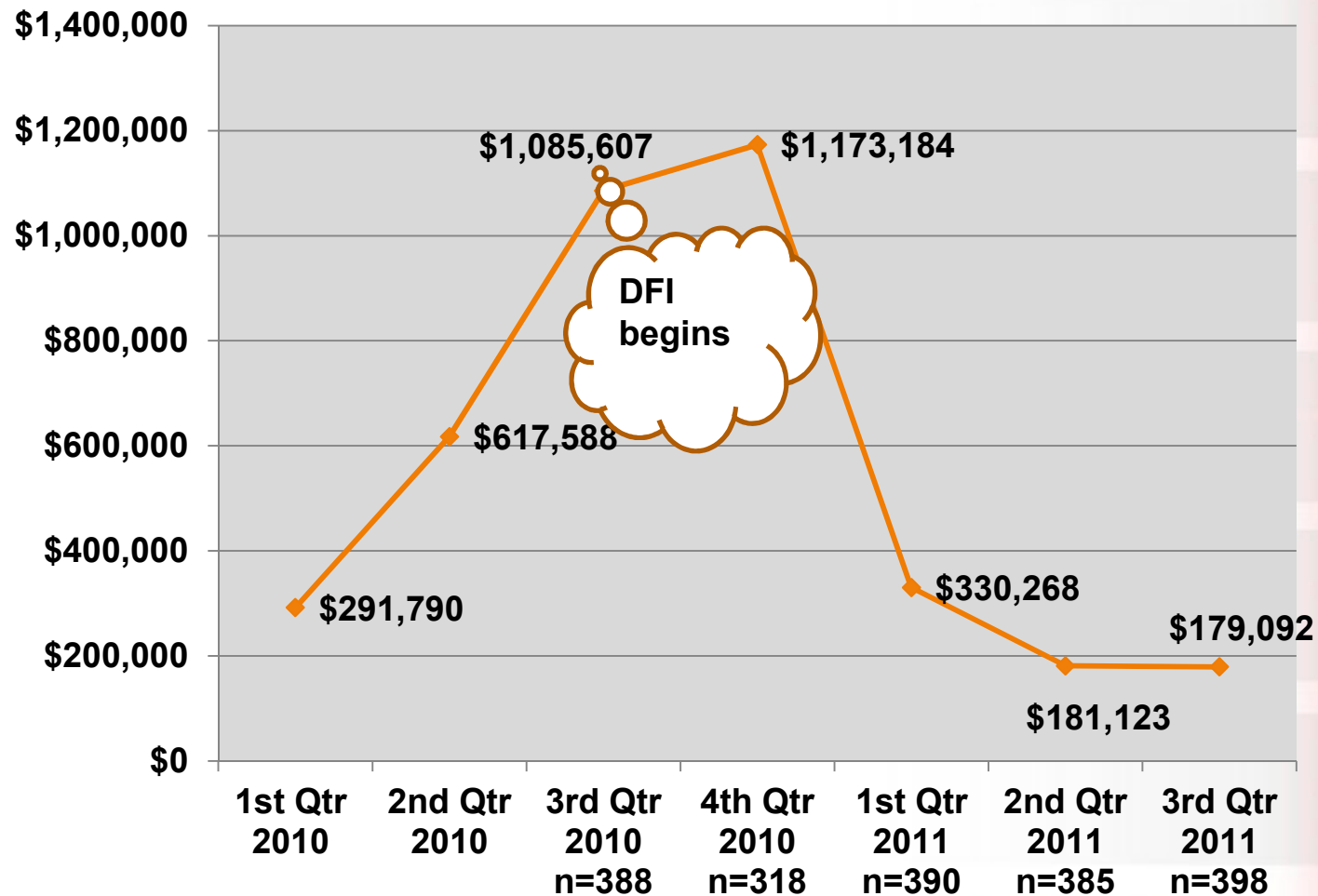
Frequency of Emergency Room Visits for Medical Visits, Quarterly, Based on HFS Claims Data



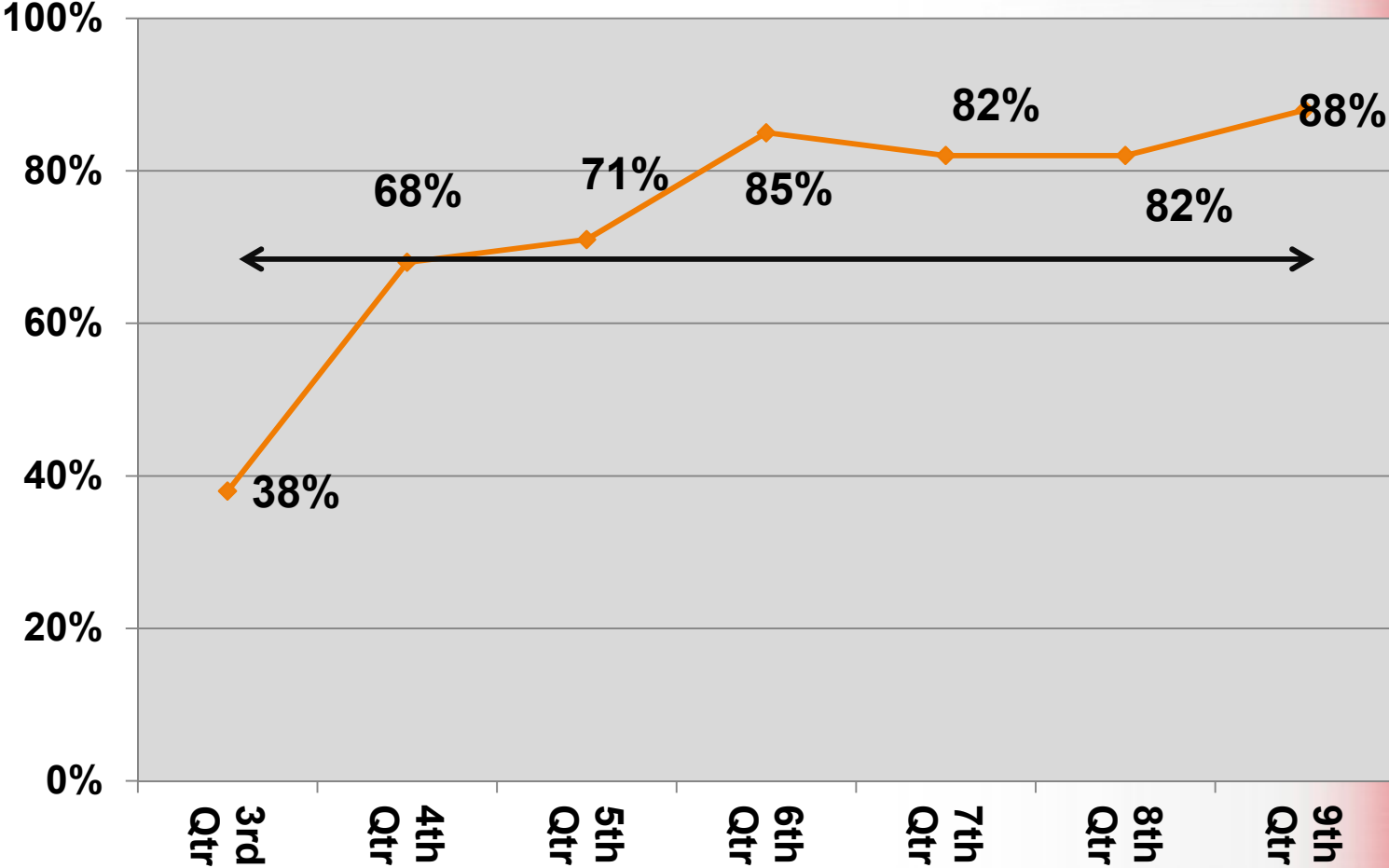
Medical Inpatient Admissions per Quarter for Patients in DFI Based on HFS Claims Data



Quarterly HFS Claims for Medical Inpatient Admissions



Rate of Improvement in Quality of Life As Indicated by the SF 12v2 Score



Our Vision

- Best Outcome For Every Patient
Every Time



THANK YOU